

Name: \_\_\_\_\_

Date: \_\_\_\_\_ Pd: \_\_\_\_\_

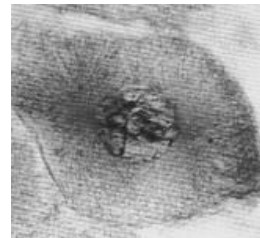
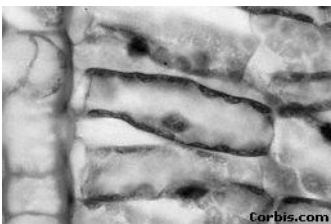
## ABCs of Life

### Show What You Know

- ⊙ \_\_\_\_\_ are the basic units of all living things or building blocks of life. They were first seen by \_\_\_\_\_ in the mid-1600s.
- ⊙ \_\_\_\_\_, the Father of Microscopy and inventor of the first **simple** microscope, had a true passion for observing cells and is credited for discovering many different types such as bacteria.
- ⊙ Cells are made up of cell parts called \_\_\_\_\_.
- ⊙ **The Cell Theory:**
  - All organisms are made up of one or more \_\_\_\_\_.
  - Basic units of \_\_\_\_\_ and \_\_\_\_\_ in all organisms.
  - Cells come from other cells that already \_\_\_\_\_
- ⊙ Plant and animal cells have common structures such as: \_\_\_\_\_ **cell membrane**, and \_\_\_\_\_.
- ⊙ **Plant** cells are surrounded by a \_\_\_\_\_, which encloses the entire cell including the cell membrane. This gives support to the plant's structure, protects the cell, and helps to account for the brick-like shape found in many plant cells.
- ⊙ All plant and animal cells are \_\_\_\_\_ because they have a true nucleus in every cell.

### Practice.

Which cell is which (PLANT or ANIMAL)...label below and explain why?



---

---

---

---

---

---