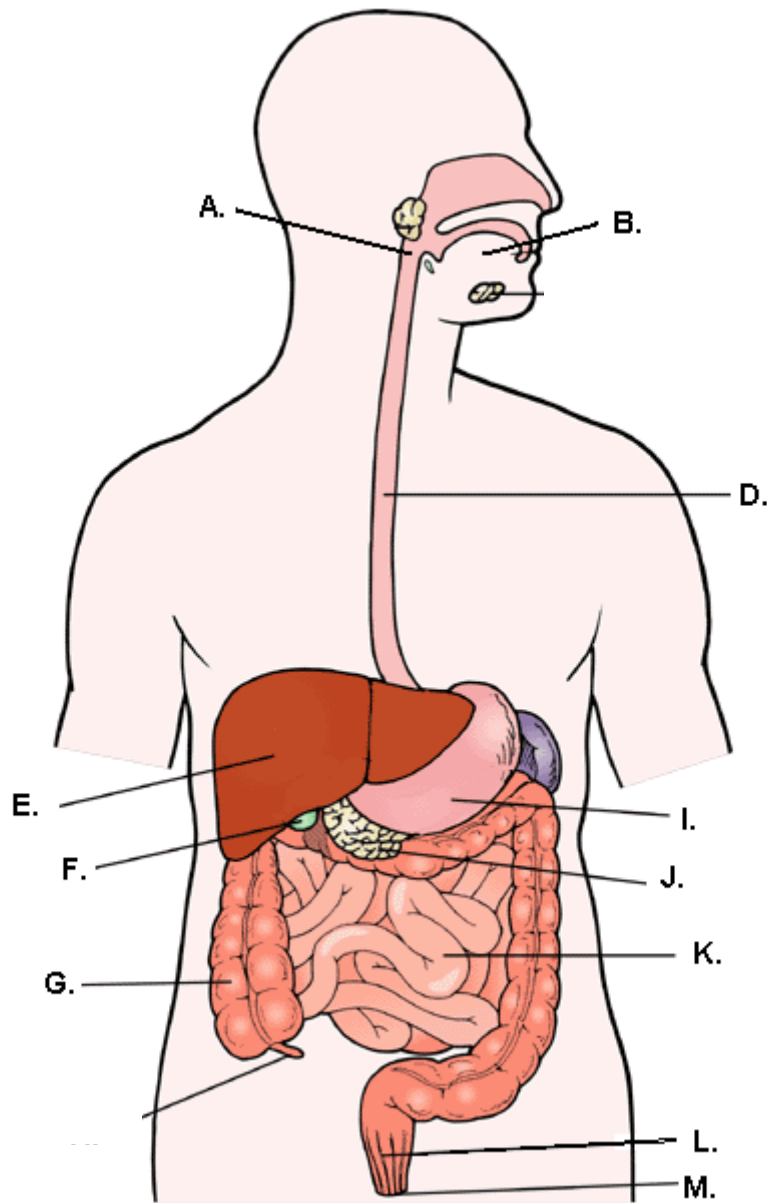


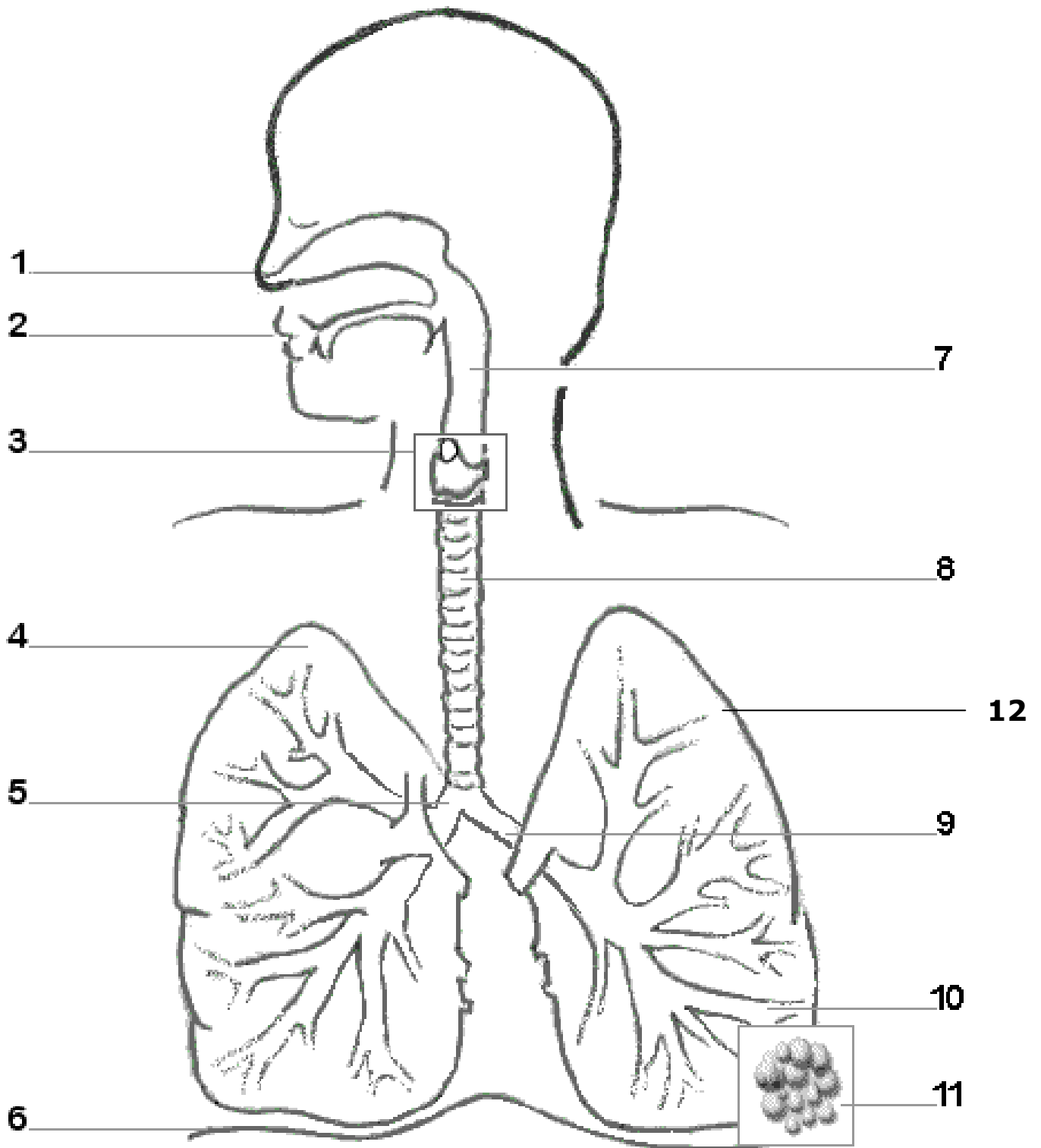
Digestive System

Label the Organs: Epiglottis, Liver, Large intestine, Anus, Stomach, Gall bladder, Small intestine, Esophagus, Tongue, Pancreas, Rectum



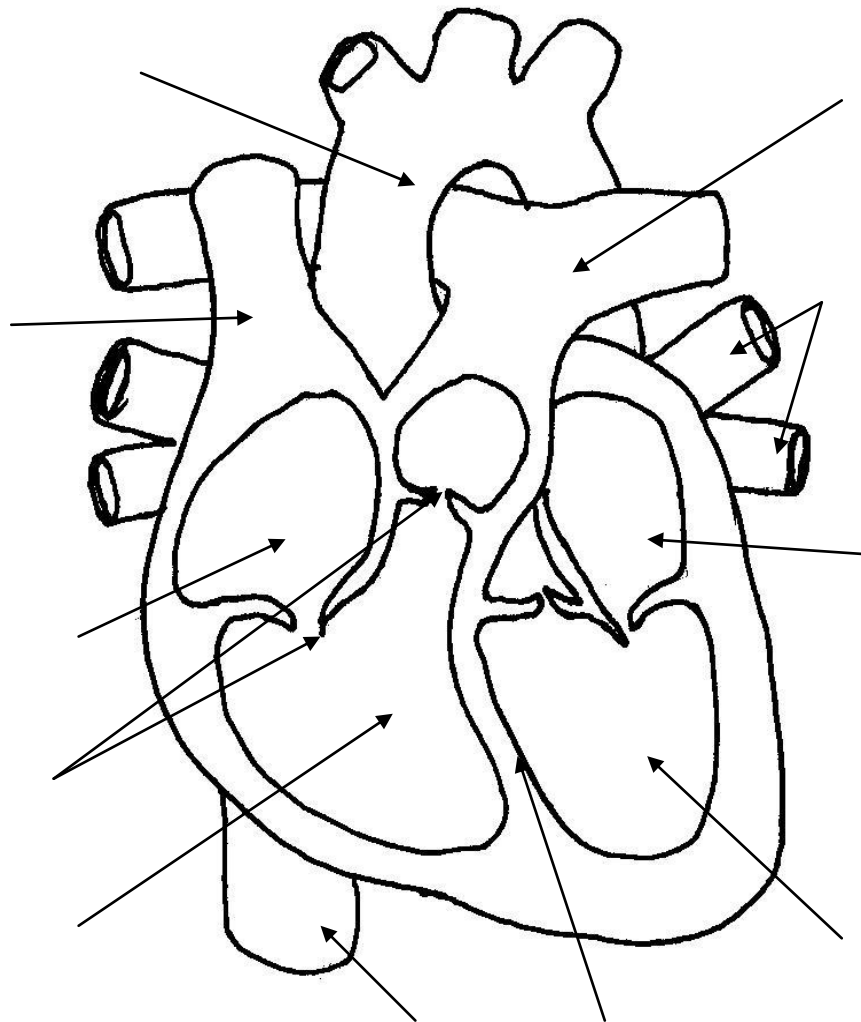
Respiratory System

Label the Organs: Larynx, Right lung, Right bronchus, Alveoli, Mouth, Pharynx, Left lung, Left Bronchus, Bronchiole, Trachea, Diaphragm, Nose



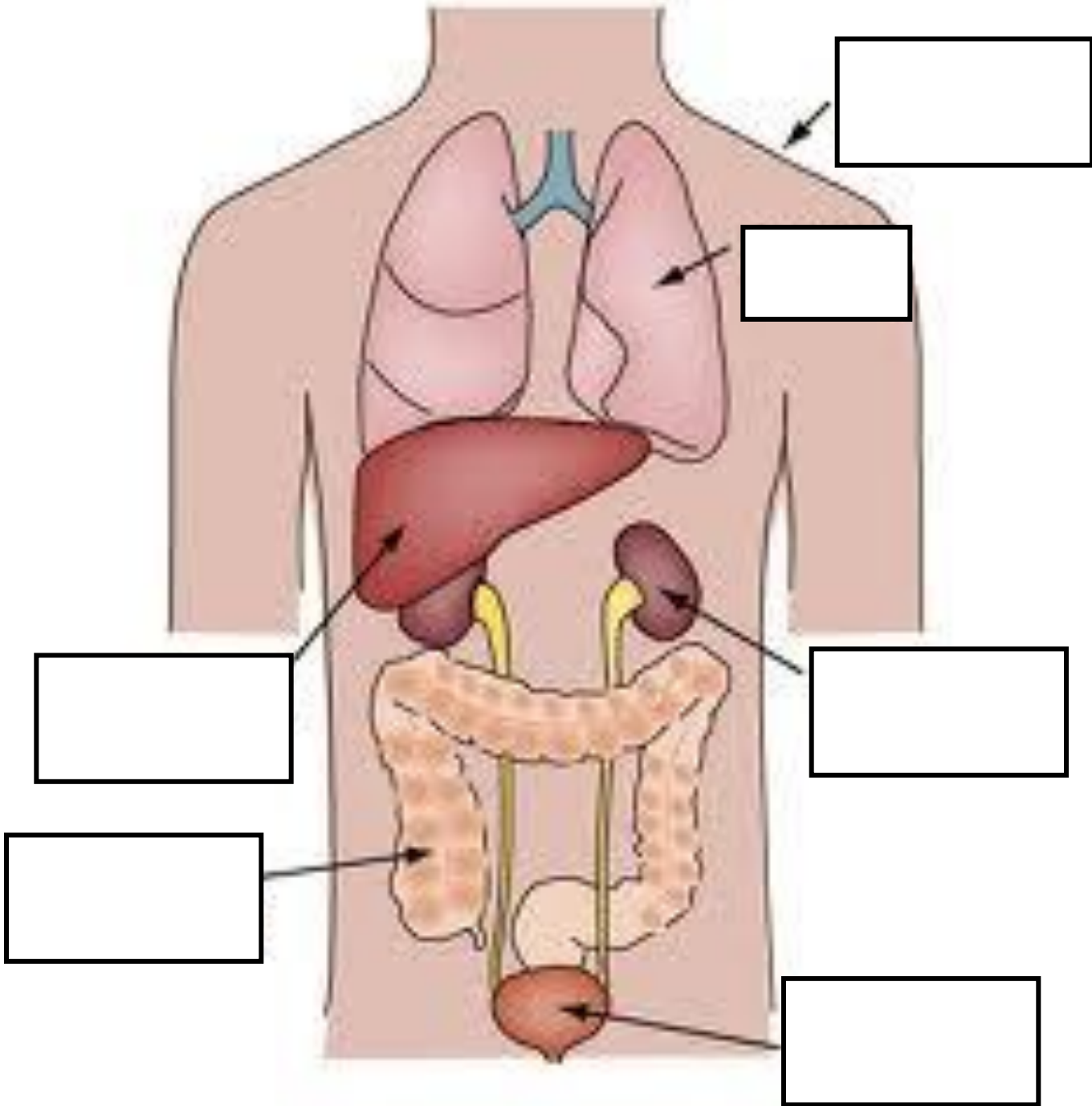
Circulatory System

Label the Heart: Left ventricle, Right ventricle, Left atrium, Right atrium, Septum, Valves, Aorta, Pulmonary arteries, Pulmonary veins, Superior vena cava, Inferior vena cava



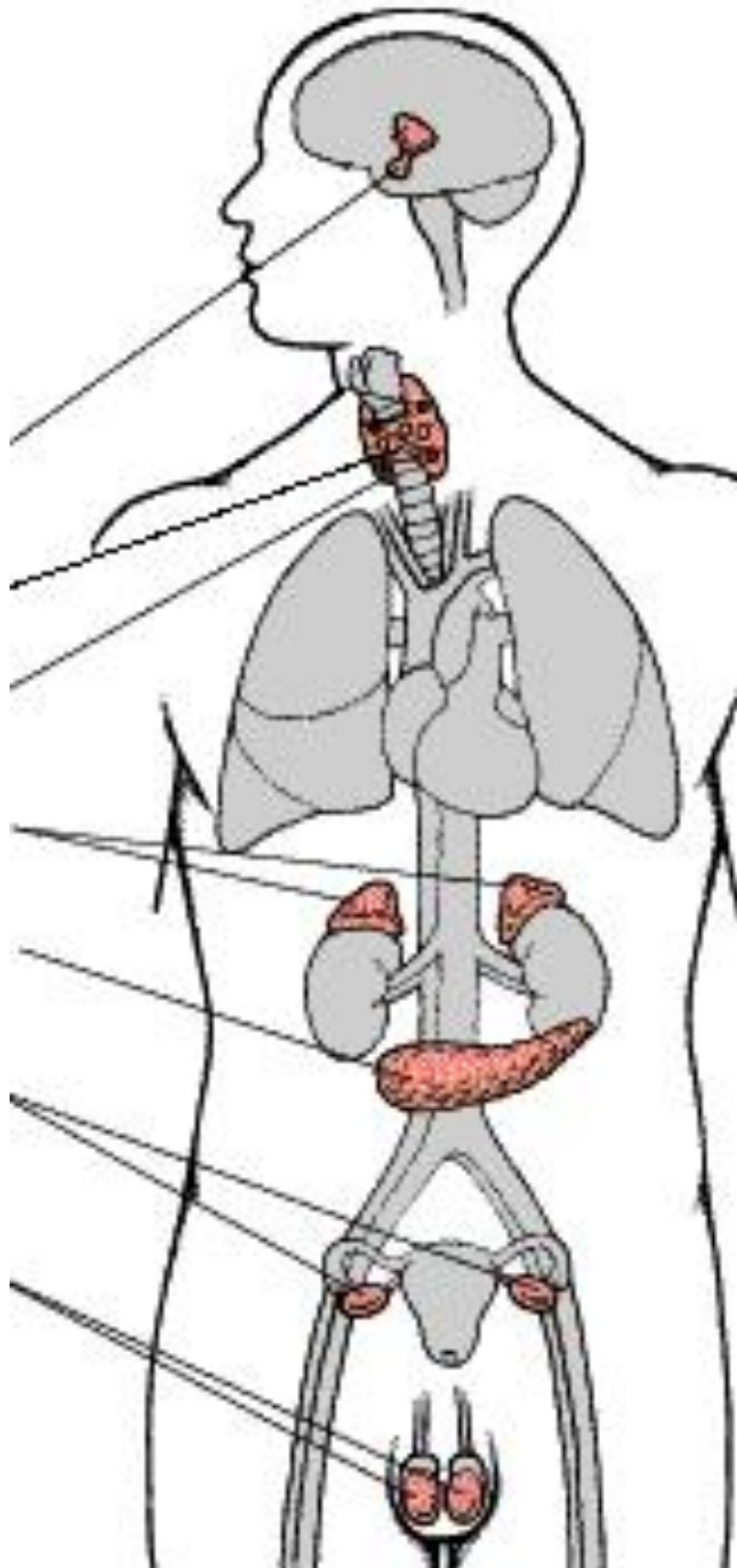
Excretory System

Label the Organs: Kidneys, Lungs, Bladder, Skin, Liver, Large intestine



Endocrine System

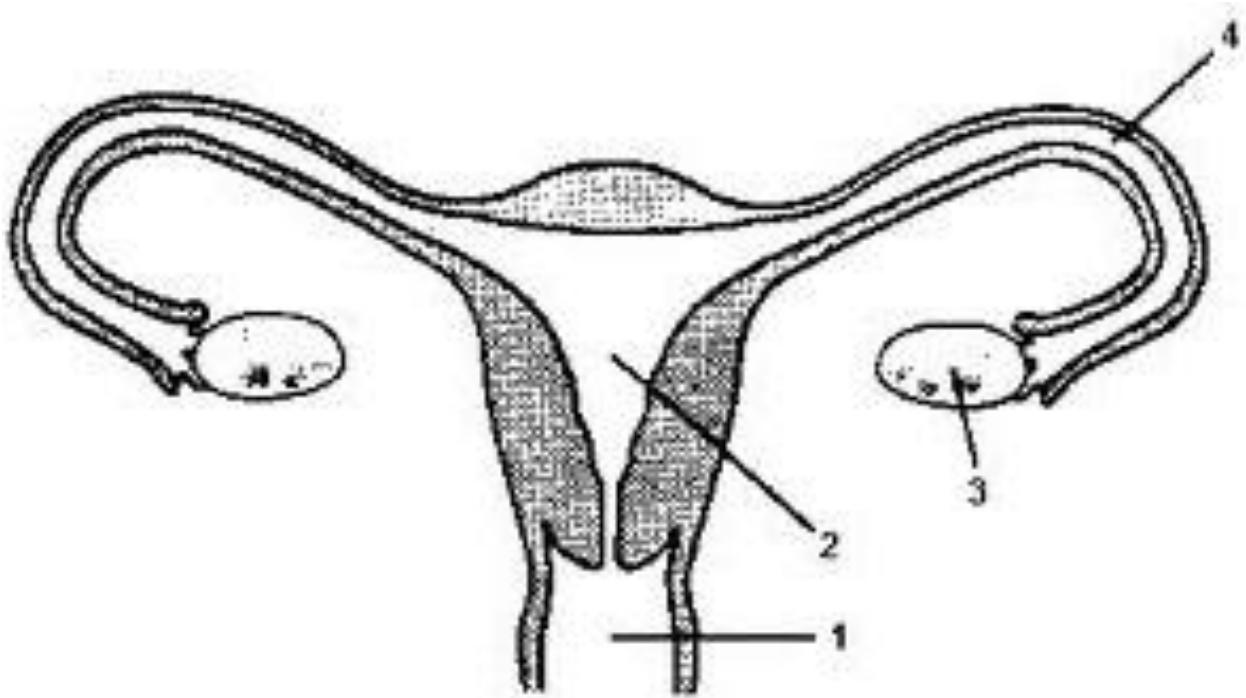
Label the Organs: Adrenals, Parathyroids, Pituitary, Ovary, Pancreas, Thyroid, Testis,



Reproductive System

Female

Label the Organs: Ovary, Vagina, Fallopian tube, Uterus



Male

Label the Organs: Testes, Penis, Scrotum

